







INSTALLATION GUIDE

PROJECT 2016 PROFESSIONAL

32 & 64 Bits

System Requirements:

-  1 gigahertz (GHz) or faster 32-bit (x86) or 64-bit (x64) processor*
-  1 gigabyte (GB) RAM (32-bit) or 2 GB RAM (64-bit)
-  16 GB available hard disk space (32-bit) or 20 GB (64-bit)
-  DirectX 9 graphics device with WDDM 1.0 or higher driver

The key is a prepaid code that is not compatible with preinstalled software. This is an original MS product.

RECOMMENDATION: Uninstall any previous version of Project that you have installed on your computer and restart your PC again. This is important to avoid compatibility problems.

This product does not work for MAC computers.

Please follow these steps for a successful activation:

1. **Download:** Download the desired version with the following download link:

32 Bits

64 Bits

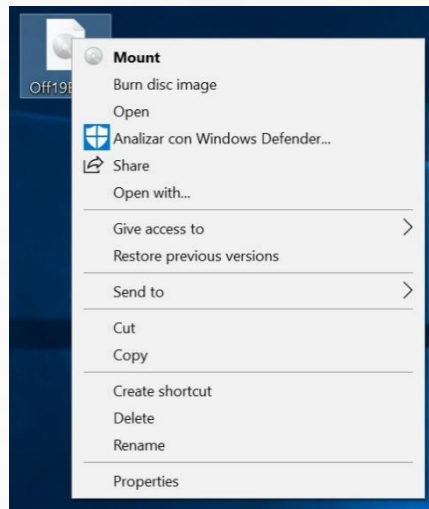
(If your device has more than 4 Gb of RAM, we recommend the 64-bit version)





INSTALLATION GUIDE

2. Installation: Once the download is completed, right-click on the file and choose Mount from the drop-down menu.

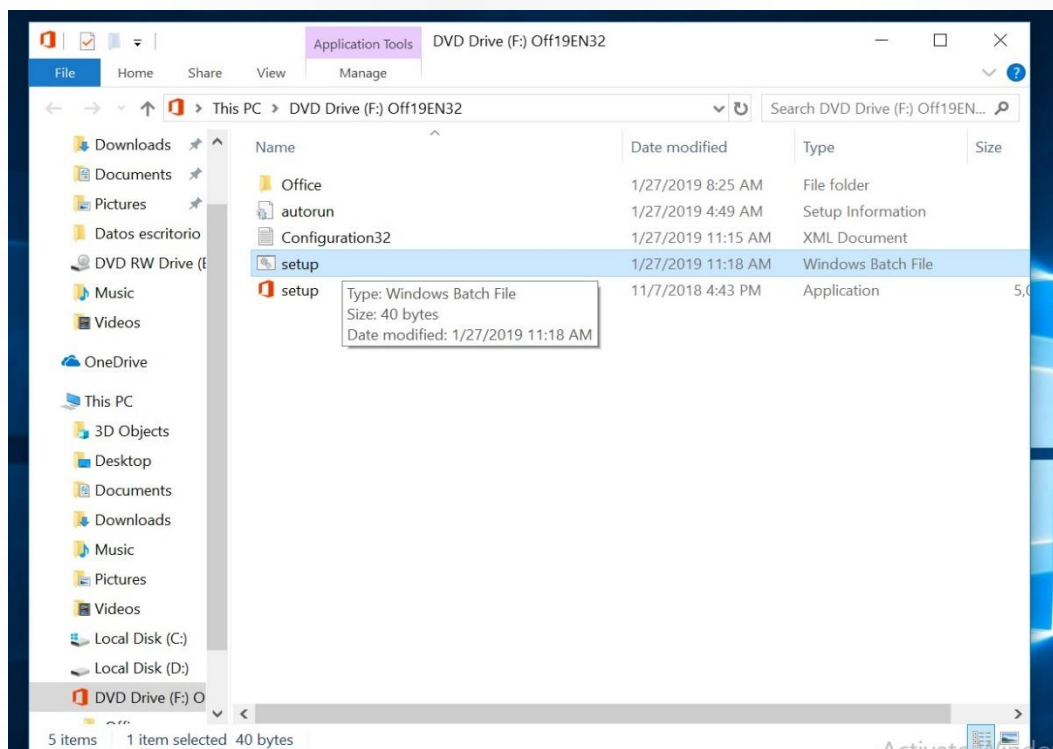


3. Note: The mounted drive should appear on your computer. If not, you must use an alternative program, like **WinCDEmu**. Which can be downloaded via the following link:



Use this tool to create a virtual drive from which you can install the program.

4. Installation phase: Once the image is mounted, you can access it from your computer as a DVD drive.





INSTALLATION GUIDE

5. Enter product key: The installation is being prepared. When finished, please enter the product key. Once entered, the activation is completed.

Additional information: If there is no request to enter the key, please go **to File -> Account -> Activate product.**

Activations for keys 2/3/4/5 PC

To perform the remaining activations of your key, you must follow the instructions in this guide on each computer, where you want to install the program.

We wish you a successful installation. If you still have problems or questions about the installation, please contact our customer service at any time. We will help you as soon as possible.

